

Embroidery i² for Adobe Illustrator: Getting Started

© Copyright 2009 Pulse Microsystems Ltd. All rights reserved.

This Embroidery i² User's Guide and software are copyrighted by the developer of the software, Pulse Microsystems Ltd. All rights reserved.

Information in this document is subject to change without notice.

The software described in this document is furnished under a license agreement and/or nondisclosure agreement. The software may be used or copied only in accordance with the terms of those agreements. No part of this publication and the software may be copied, photocopied, reproduced, translated, or reduced to any electronic medium or machine-readable form without the manufacturer's written permission.

Microsoft® and Windows® XP/Vista are registered trademarks of Microsoft Corporation. Apple®, Macintosh®, and Mac OS X Leopard® are all registered trademarks of Apple Corporation. Adobe Illustrator® is a registered trademark of the Adobe Corporation. All other product names are copyrighted and registered trademarks or trademarks of their respective holders. All computer and software names identified by TM or tm are trademarks of their respective manufacturers.

Rev 2009 – 1 (06/2009)

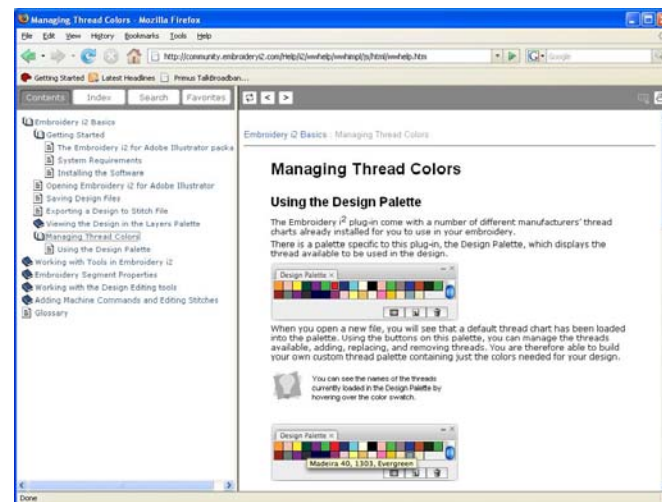
Viewing the Embroidery i² Help

Embroidery i² for Adobe Illustrator Help is available on the Embroidery i² home page. The help contains detailed instructions for all tools and settings that are specific to the Embroidery i² plug-in, such as the Embroidery Path tools, the Properties Panel, and the various Editing tools.



Important: The Embroidery i² help is not intended to supplant the Adobe CS3 help; for regular tools, settings and functions of Adobe Illustrator, refer to the Adobe Illustrator help in Adobe Help Viewer.

There is an html version that will open in your browser and a pdf version that you can view or print. Just click the [Online Help](#) link for the html version and the [User's Guide](#) link for the pdf manual.




Server Name: When you sign on, you are able to choose from a list of Embroidery i² servers. To view the available servers, open the Embroidery i² Home page, and click on the View Available Servers link.

This will display the addresses of the servers, and you can copy and paste (or type) any one of them into the Server name field.



Server port: Type '8888'.

Username and Password: Sign in with the same user name and password that you created when you registered. Click **OK**.

 If you do not have an internet connection, you can still edit your Illustrator files off-line – you just will not be able to use any embroidery tools. To work off-line, just click Cancel instead of OK in the Communication Info dialog. Adobe Illustrator will open as usual, and you will be able to edit other (non-embroidery) path segments.


Introduction:

Thank you for purchasing the Embroidery i² for Adobe® Illustrator® plug-in. In the sections that follow, you will learn all you need to know to get started doing creative embroidery work using Embroidery i².

System Requirements

For PC: Microsoft® Windows® XP with Service Pack 2 or Windows Vista™ Home Premium, Business, Ultimate, or Enterprise (certified for 32-bit editions).

For Mac: OS X v10.4.8–10.5 (Leopard), and a multi-core Intel® processor.

 Important Note for Mac users: The Embroidery i² plug-in will not work with the Power PC chip, used in older Macs; and Intel-based computer is required to run the software.

If you are unsure about which chip your computer uses, you can look it up by doing the following: click the Apple symbol on the menu bar, and select About this Mac from the list. The new window that opens gives the specifics on your chip, under the heading "Processor". If the processor has Intel in the name, it will work with Embroidery i².

Plus, for either system: Adobe Illustrator CS3 or CS4 and a working internet connection.

Registering with the Embroidery i² Community

All the installation, downloads, and support for Embroidery i² is internet-based. At time of purchase, your distributor will give your activation code, which allows you to activate your software on the site.

The first thing to do is to go to the Embroidery i² site at <http://www.embroideryi2.com>, and click the Registration button. You will be taken to a page that will look like this:



The screenshot shows the Embroidery i² website interface. At the top, there is a logo for "Embroidery i² for Adobe® Illustrator®" and navigation links for "Home" and "Community". Below the navigation, there are two main sections: "I need to register" and "I am already registered". The "I need to register" section contains the text "New to i2?" and "Register your Activation Code Now!" with a "Register Now" link. The "I am already registered" section contains the text "You have to login to continue:" followed by input fields for "User Name:" and "Password:". There is also a checkbox for "Remember me next time." and a "Log In" button. A link for "Forgot your password?" is also present.

Click on the Register Now link, and you will see another page with a field in which you can enter your activation code.

You will now be taken to the Registration page (your activation code is will be displayed in place of the string of x's in the illustration). In the fields on this page, create your own User Name and Password, and then confirm the Password.



You may need to restart your computer at this point for the plug-in to function properly.

Starting Embroidery i² for Adobe Illustrator:

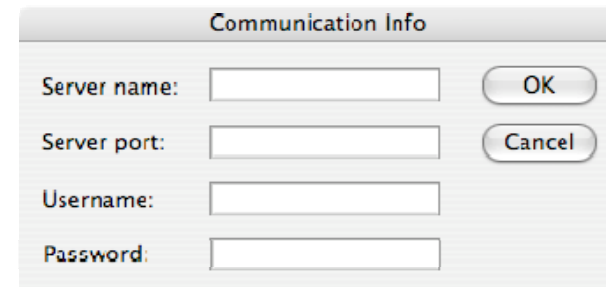
Once you have installed the Embroidery i² plug-in, it will be loaded into Adobe Illustrator each time you open it. Just launch Adobe Illustrator as usual, and sign in when you see the Communication Info dialog; this dialog launches automatically as Adobe Illustrator loads plug-ins at start-up.




This sign-on procedure takes place every time you start Adobe Illustrator with the Embroidery i² plug-in installed; however, the fields are set to remember your information. So, after you have input the required information once, you can just click OK every time you need to sign on to the server. The only time you would need to change one of these fields is if you change to a different server.

The Communication Info dialog:

To use the embroidery path tools, you need to be signed on to the i2 server. When the plug-in loads, you will see a dialog like this:



The screenshot shows the "Communication Info" dialog box. It has a title bar with the text "Communication Info". Below the title bar, there are four rows of input fields: "Server name:", "Server port:", "Username:", and "Password:". To the right of the "Server name:" and "Server port:" fields are buttons labeled "OK" and "Cancel" respectively. The "Server name:" and "Server port:" fields are empty, while the "Username:" and "Password:" fields contain some text that is partially obscured.

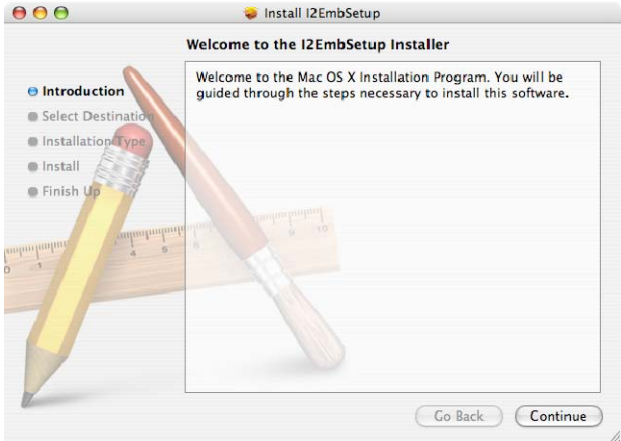
 If Adobe Illustrator is already open on your machine, you will need to close and restart it at this point for the plug-in to function properly.

Mac OS Installation:

When you download the Mac version of the install, you will see that the installation package is contained in a zipped folder, I2EmbMacSetup.zip. Double-click on the zip file and unpack the files. After the files unpack, you will see the Installer Package icon:



Double -click the Installer Package icon, which will automatically start the installation.



Click continue, and then follow the step-by-step instructions; when you get to the end of the installation process (the message “the software was successfully installed” will be displayed) click close. For a more detailed view of the procedure, please look under “Installing the Software “ in the User’s Guide.

Register Activation Code

XXXXXXXXXX-XXXX-XXXX-XXXX-XXXXXXXXXX

Enter connection details:

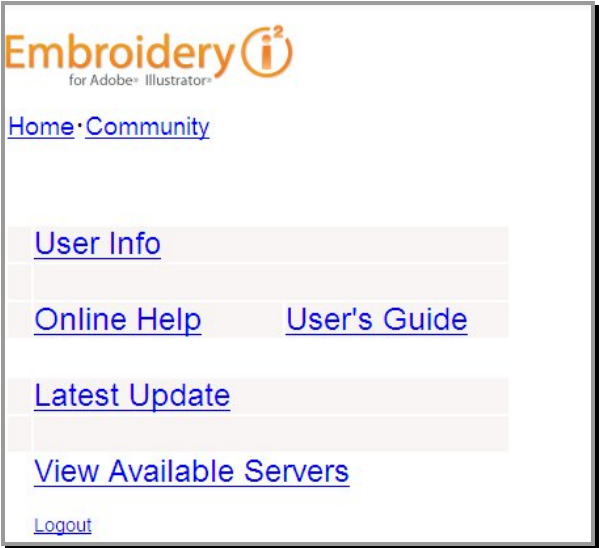
User Name:

Password:

Confirm Password:

E-mail:

Once you have created your User Name and Password and entered your E-mail, click the **Register** button. You will now be taken to the home page, which looks like this:



From this page, you have access to many resources: You can download the latest version of the Embroidery i² plug-in, view the online help, download a printable User's Guide, and view a list of available Embroidery i² servers.

Clicking on the [Community](#) link will give you access to all the features of the Embroidery i² Community. This is an online venue for sharing information, projects and ideas about design with Embroidery i² for Adobe Illustrator. There are blogs, forums, a project gallery, and much more.

Downloading the Installer:

Once you have registered and signed on to the Embroidery i² home page, you can download the installation files at any time. From the Home page, navigate to the [Latest Update](#) page.



On this page, you will find separate links to the Mac OSX and Windows versions of the software. Double-click on the version that applies to you, select a

destination for saving the install, and the appropriate files will download.

Installing the Plug-in:

Windows Installation:

When the download is complete, open the directory containing the install executable (Embl2WinSetup.exe), and double-click to launch it. You will then see an Installshield Wizard page, which will begin to extract the required files. After the Installshield finishes extracting the files (this may take a few minutes), this screen will appear:



Click next and follow the step-by-step instructions. When the Installshield Wizard is done installing the plug-in, click finish to close the Wizard.

For a more detailed view of the procedure, please look under "Installing the Software" in the User's Guide.